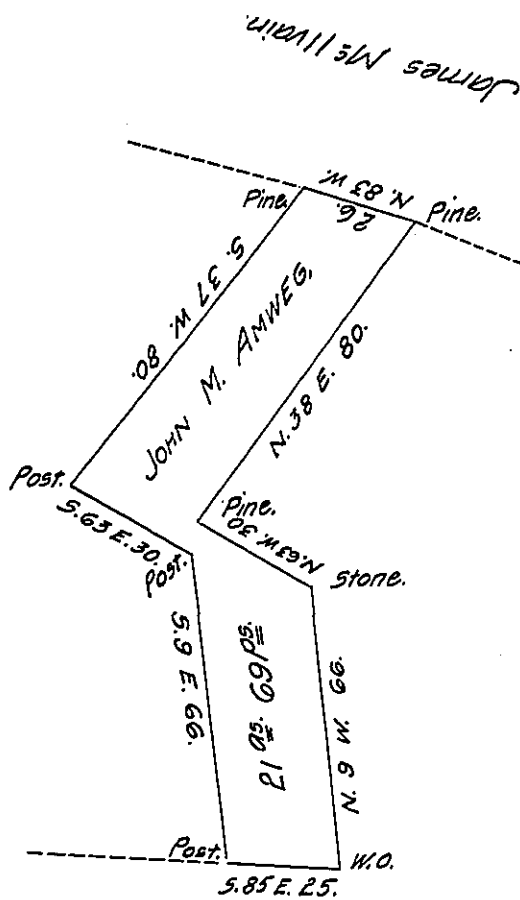


John Hoover



Dull

William

For true bearing  
add 2° N. W. & S. E.  
et vice versa.

Situate on Rayshill in Wells Township, Fulton County, Containing 21<sup>05</sup>  
 69<sup>P's</sup> and the usual allowance of six per cent for Roads &c. Surveyed the 21<sup>st</sup>  
 day of April, 1856, on warrant dated the 23<sup>rd</sup> day of April, 1855, grant-  
 ed to John M. Amweg for 20<sup>05</sup>

Andrew J. Fore, C.S.

To J. Porter Brawley, Esq, S.G.

IN TESTIMONY that the above is a copy of the original remaining on file in  
 the Department of Internal Affairs of Pennsylvania, made  
 conformably to an Act of Assembly approved the 16th day of  
 February, 1833, I have hereunto set my Hand and caused  
 the Seal of said Department to be affixed at Harrisburg,  
 this Sixth day of April, 1908.

*Henry Hoover*  
 Secretary of Internal Affairs.